



European Regional Development Fund  
European Territorial Cooperation  
2007 - 2013



# Application Guide

## 3<sup>rd</sup> Call

### Contents:

1. Introduction .....	1
2. Application Procedure.....	2
3. Project Selection Criteria .....	3
4. Guidance Notes to the Application Form .....	4
Appendices .....	19
Appendix A – Project selection criteria .....	19
Appendix B - Indicative overview of environmental objectives for E.3.....	23
Appendix C – NUTS 3 regions .....	28

# 1. Introduction

## **Application Materials**

The application materials have been prepared to guide potential project applicants when making project preparations.

The general outline of the programme is presented in the Operational Programme. An abstract can be found in the document “Priorities and Strategy”. This document provides the strategy of the programme and information on the content of the priorities and areas of intervention.

## **The Application Guide**

This application guide aims to give practical information for project applicants to the Interreg IVB North Sea Region programme. It is the most practical level of the documentation needed for successful submission of a project in this programme. The guide gives information about how to fill in the application form, the application procedure, the project selection criteria, the decision procedure and some practical financial guidance. This document is complemented by Fact Sheets and Info Sheets with specific information on a number of issues.

## **Successful Applications**

If you are in doubt about your project application, please contact the Secretariat for advice, but note it is a very busy time at the moment setting up the new programme. Remember applying for projects is going to be a very competitive process. The programme seeks for high quality projects with large impacts; it is not just about meeting the criteria. In the end it is the Steering Committee deciding by consensus, which projects will achieve most for the programme.

All documents mentioned and presented here can be found on the website of the Interreg North Sea Region Programme: [www.northsearegion.eu](http://www.northsearegion.eu)

## 2. Application Procedure

The first step for a partnership that is in the process of developing an Interreg IVB North Sea Region Programme project application is to read and consider all application materials carefully. You can find help on the relevant application sections on the Programme's website [www.northsearegion.eu](http://www.northsearegion.eu). You can also follow the latest developments in the news section. When the details of the project idea have been clarified and all organisations have expressed their commitment to the project, an application form may be filled out. Please note that the application form should be submitted to the Secretariat before or on the deadline of the call for applications.

Upon receipt of the project application in the Secretariat, the Lead Beneficiary and the national authority of the lead applicant will be sent notification of its receive. All projects will first be assessed on eligibility. If the project fails the eligibility check, the Lead Beneficiary will receive a letter from the Secretariat explaining on what grounds the project application failed. The Steering Committee will be notified of all projects that failed to meet the eligibility check.

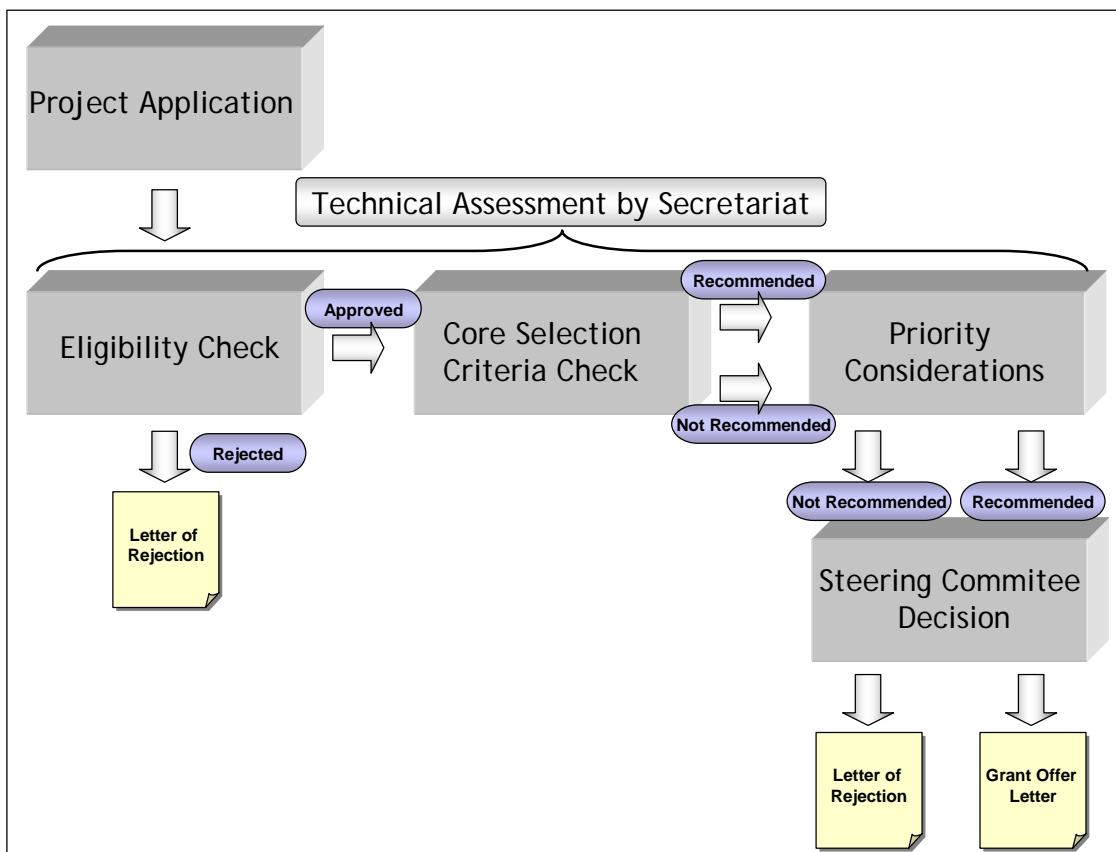
When a project meets the eligibility requirements, it will come to the next stage of assessment and will be tabled at the Steering Committee meeting. The Secretariat will carry out an assessment of the application applying the core criteria and the priority considerations. Based on the assessment and the application form, the Steering Committee will make a decision. After the Steering Committee meeting, the lead applicant will be informed of the decision. Once a project application is approved, the Secretariat will draw up the Contract on behalf of the national authorities of the Lead Beneficiary organisation. When the Steering Committee rejects the project, a letter of rejection will be sent to the Lead Beneficiary. The Lead Beneficiary is responsible for communicating to the other partners in the project.

### 3. Project Selection Criteria

Project applications submitted for funding under the Interreg IVB North Sea Region Programme will be required to meet the criteria for approval. These consist first of the eligibility check and second the core criteria. As a third step, priority considerations will be used for the assessment and selection of projects. Only projects that pass the eligibility check will be considered by the Steering Committee. The selection of projects will be guided by the core selection criteria and priority considerations. Only projects that pass the core selection criteria check can be approved by the Steering Committee. When the Steering Committee has to choose between projects, the priority considerations will guide them as to the project's quality and potential to contribute to the programme targets.

The Secretariat will carry out the technical assessment of the projects, according to the approved procedure and criteria. The Steering Committee approves or rejects projects.

The following picture illustrates the different steps of the project selection process:



## 4. Guidance Notes to the Application Form

The following information is meant to help you fill in the application form. The application form may change for each call. Please check you have the correct application form for the call you are applying under. The numbers below refer to the sections of the application form.

When you fill in the form, please remain inside the boxes and to the number of characters indicated. Remember to be concise and to the point! Any information that is in excess of the number of characters will be discarded. If any further information needs to be given, this may be done in an appendix to the application of up to 10 pages. Please remember that only the application form itself is guaranteed to be considered by the Steering Committee. It is therefore essential to provide all the important information in the form itself. When filling-in the application form, please consider that it will be insufficient to reiterate any content of programme documents.

Project number: Will be filled in by the Secretariat.

Registration date: The registration date will also be filled in by the Secretariat. The registration date is the day the fully completed, dated, stamped and signed application form, together with the Letters of Commitment from all partners arrive at the Secretariat. Both the application form and the Letters of Commitment should be physical documents that arrive at the Secretariat before the deadline announced at the call for proposals. In addition a copy of the completed application form needs to be sent in as a digital document by e-mail.

### 1. Title of the Project

1.1 State the official full title of the project.

1.2 Give a short name or acronym to which the project can be referred. The use of an acronym or short name is necessary for efficient communication and administration.

### 2. Organisations Submitting an Application and Undertaking a Project

2.1 The *Lead Beneficiary* is, as the final beneficiary, responsible for the implementation of the entire project. This organisation will be responsible for reporting to the Secretariat after approval of the project. More information on Lead Partnership can be found in the Fact Sheet on the Lead Partner Principle. The Lead Beneficiary must be a public or public-similar organisation. This issue is elaborated in more detail in the Fact Sheet on Funding Plans. For the Lead Beneficiary organisation, both the name of the director responsible and the project manager are requested. For other partners one contact name will be sufficient.

2.2 If there are more *partners* involved in the project than rows available, remember to provide the relevant for these organisations too, e.g. as an additional appendix. Either copy the section within the form or ask the Secretariat for a form that allows for your number of partners. Information about which NUTS region each partner belongs to can be

found in the appendix. For partners outside eligible area, please list the NUTS code as well and add 'outside'.

N.B: When giving information about the partners in the Application Form, please, make sure that the number of the partner always refers to the same partner. That is, that information on e.g. partner 2 always refers to the partner stated as no 2 in this section; "Organisations submitting application and undertaking project", that the same goes for partner 3 etc.

2.3 *Amount of the grant applied for.* Here the total amount of ERDF support, or Norwegian ERDF equivalent, sought should be stated. Please note that this must match exactly with the funding plan of section 7. No more than 50% of eligible project spending from each partner can be matched by ERDF support or the Norwegian ERDF equivalent.

2.4 State all the *funding* involved in your project, which does not come from official project partners. Remember that this funding can not generate ERDF funds. Also organisations involved without a financial contribution should be stated here.

2.5 If this project has sought *funding from other sources* prior to the Interreg IVB application, this should be stated here. In addition, if the Interreg project is part of a combined funding scheme, this should be explained here.

### 3. Project Description

3.1 Tick the appropriate box for the *one area of intervention* that fits your application best. To find out the appropriate area of intervention, you are advised to read the text in chapter 4 of the Operational Programme.

3.2 If your project has an *impact on more areas of intervention* than the main area stated in section 3.1, you should tick them here.

3.3 *Rationale* - give a clear description of the problem the project is going to tackle and the contribution the project is going to make to solve it. Describe what is new about the project in relation to the state of the art - including other ERDF activities and other projects and programmes in the area - and in relation to what will be achieved in this area in the future anyway. Describe why the chosen partnership is necessary for the project. Justify the level of achievements the project is going to have in terms of a long lasting impact of its final results.

3.4 The *aim of the project* is the impact that the project is going to achieve or contribute to. In some cases it helps to think of the problem or problems you wish to resolve when formulating the aim of the project. The relationship between the aim, objectives and activities of the project should link to each other. The activities carried out and the objectives pursued should all contribute to the overall aim of the project. For example, the construction of a new vehicle identification system can be the activity conducted within the project, finalisation can be the objective (to be implemented when the project is finished), while safer transport and more efficiency on a respective transport corridor is the aim.

3.5 *Objectives* are chosen by the project partners as the planned immediate short-term effects to be achieved by implementing the project. They represent the outcomes (results during the project) and end-results (the final results, which the projects aims to deliver at the very end of the project), which will be achieved during the course of the project. Generally it is possible for the partnership of the project to ensure the achievement of the projected objectives by carrying out the planned activities of the project. Please describe also in which way your outcomes and end-results will be tangible and measurable.

3.6A *Activities* to be carried out in the project. Fill in the activities planned to achieve the objectives set out in 3.5. They link with the project finances due to be filled in in section 7. Give details of the *outcomes or end-results* of the project here, and make sure that this links to the phases in 3.6B and the phasing of your budget.

3.6B Describe the different *phases*. Each phase should end with outcomes or end-results described in 3.6A. Each project should consist of at least 3 phases – only very small projects could have less than 3 phases. Phasing is necessary for appropriate monitoring of the progress of the projects. The start and completion date of each phase, the responsible partners and the outcomes and end-results should be filled in in section 7.3. For subdividing the project in different phases it might be helpful to think in terms of different work-packages.

3.7A *Location of activities - transnational co-operation* involves joint implementation of activities. List where the activities carried out within or in connection to the project will be located or have an impact. Explain how the transnational co-operation will be carried out. Which of the activities listed are carried out together with the transnational partnership?

3.7B Section 5.2.3.3 of the Operational Programme\* sets the limits as regards the location of and the amounts spent on activities outside eligible area. Could you please indicate, which activities will be carried out outside eligible area, in which area, the beneficiary they are attached to and what the proportion of the budget is.

\*: In line with the ERDF Regulations, in cases where there is clear benefit for the North Sea Region, expenditure of up to 20% of the individual project budget may be spent outside the North Sea Region Programme eligible area. This will be restricted to within the 3 neighbouring transnational programme areas: North West Europe, Northern Periphery and Baltic Sea. Spending of 10% in the rest of Europe and outside the European Community may be possible, in rare and exceptional cases where the impact of a strategic project would thereby be maximised. The responsibility for the correct use of the funding of activities carried out outside the eligible area will remain with one specific project partners inside the eligible area, this partner will be the final beneficiary. The chain of responsibility will be specified in the Grant Offer Letter for each individual project. This means that the member state/Norway, in which the responsible partner/beneficiary is located, is ultimately responsible in cases of irregularities.

3.7C Indicate which of the following *classifications* applies to the location of the activities of the project.

- *Urban*: most of the activities and most of the impact of the project will take place in urban areas.

- *Rural*: most of the activities and most of the impact of the project will take place in rural areas.
- *Maritime*: most of the activities and most of the impact of the project will be maritime.
- *Not geographically delimited*: the activities of the project and the impact of the project are expected not to be limited to urban rural or maritime areas. They might take place in more of one of them or in other areas.

3.8 Essential information on the project that is not covered elsewhere in the form can be written down here.

3.9 State here, if the project builds on any former or other ERDF project. Links to any other projects or programmes should also be indicated here. Please indicate what the common issues and the differences are between your project and these other projects and/or programmes and how you plan to take up from there.

#### **4. Contribution to the Joint Transnational Strategy of the Programme**

All projects in the Interreg IVB North Sea Region Programme must comply with the *strategy set out in the Operational Programme*. This can be demonstrated by explaining the projected contribution of this project to the aims of the programme. Explain briefly and clearly how your project will contribute to the aims listed here.

4.1 Please explain here how your project ensures *transnationality in its approach and in its partnership*. This means you should demonstrate in which way your activities will need a transnational background to be carried out and in which way your outcomes and end-results will have a transnational impact. You should also describe, in which way your partnership will have potential impact on the transnational area and how much of the geographical area of the North Sea Region this partnership covers. Co-operation with relevant organisations in different sectors is key to this issue. If it comes to infrastructure investments they should have a transnational impact, which should be described and explained here. Please take info sheet no. 2 – Transnationality – into consideration.

4.2 The *agendas of Gothenburg and Lisbon* are important European policy aims and a crucial element for the Interreg IVB North Sea Region Programme. They are closely interlinked with the EU Sustainable Development Strategy of the European Union. Successful applications should show in which way and to which degree they will deliver towards the aims of these agendas.

Together, the strategies set out objectives and measures to promote the European way of life in the face of globalisation and demographic trends towards sustainability, competitiveness and social inclusion and equity.

The European Council in Göteborg (2001) adopted the first EU Sustainable Development Strategy (SDS). Five years later, the European Council in Brussels adopted an ambitious and comprehensive renewed EU Strategy for Sustainable Development (10117/06) as a response to the persisting and growing challenges to sustainable development.

*“The EU SDS and the Lisbon Strategy for growth and jobs complement each other.  
The SDS is primarily concerned with quality of life, intra- and inter-generational equity*

*and coherence between all policy areas. It recognises the role of economic development in facilitating the transition to a more sustainable society. The Lisbon Strategy makes an essential contribution to the overarching objective of sustainable development focusing primarily on actions and measures aimed at increasing competitiveness and economic growth and enhancing job creation.*

*The EU SDS forms the overall framework within which the Lisbon Strategy, with its renewed focus on growth and jobs, provides the motor of a more dynamic economy. These two strategies recognise that economic, social and environmental objectives can reinforce each other and they should therefore advance together. ...”*

(cf. Renewed EU Sustainable Development Strategy (EU SDS) (10117/06), Sentences 7 and 8)

More information about the aims and the policies behind can be found in the project development note on the Gothenburg and Lisbon agendas.

4.2A Please tick which of the *classifications* of the EU Sustainable Development Strategy and the Lisbon Strategy apply to your project.

- *High*: strong contribution towards the classification.
- *Low*: small contribution towards the classification.
- *Neutral*: no or only very small contribution towards the classification.

4.2B Please *explain how and to what extent your project contributes* to the classifications you have chosen. This can be done by e.g. describing a clear link between the project activities and/or the end-results and the classifications.

4.3 *Promoting innovation and the transition to a knowledge-based economy* is an important feature for the future development of the North Sea Region. The programme aims to develop a positive innovation-oriented culture. The contribution of your project to this aim should be explained here.

4.4 Please state in which way your project contributes to *territorial cohesion*. Some questions which could help to answer this section are: How does the project contribute to better exploitation of regional potentials and territorial capital? Will the project help to strengthen the profile of areas within the North Sea Region through transnational cooperation aimed at facilitating their connectivity and territorial integration? Will the project support sustainable development at a national and regional level?

As background information the synthesis report and its corresponding reports as a complement of the long-term spatial vision NorVision may be used. Another source could be the Territorial Agenda of the EU.

4.5 Please describe how your project will *influence the quality of life in the North Sea Region*. The overall aim of the Interreg IVB North Sea Region programme is to “Make the North Sea region a better place to live work and invest in”. The Programme has a role in enhancing the overall quality of life for residents of the North Sea Region by ensuring that there is access to more and better jobs, by sustaining and enhancing the acknowledged environmental qualities of the region, by improving accessibility to places and ensuring that our communities are viable, vibrant and attractive places to live and work. Links to relevant regional, national and European policies and the impact of the project should be described here.

4.6A Please, indicate which of the following *classifications* applies to the project:  
The project has equal opportunities as its main focus, the project is positive in terms of equal opportunities, the project is neutral in terms of equal opportunities.

4.6B Explain how your project will contribute to the *promotion of equal opportunities*. This can be done, for example, by involving bodies responsible for the promotion of equal opportunities in your partnership or by achieving balanced participation of women, men and ethnic minorities in working groups.

## 5. Follow-up Activities

Please describe what impact your project results are likely to have two years after the project has ended. Also state what kind of follow-up actions are planned and what the chances for them are to be achieved. In general it is expected that the results of a project outlives the life time of the project. Some of the questions that could be answered here are: How will the results be implemented to outlive the project lifetime? What organisations are expected to implement results of the project? What will happen to the partnership after the closure of the project? What investments will the project generate and what investors have been contacted or will be contacted?

## 6. Project Finances

6.1 This section is a part of the *Detailed Costed Workplan* which is required as part of the project application and you are asked to state how the total amount of expenditure will apportion itself on the different fields of expenditure (budget lines). This information has to be stated for each beneficiary. Please note that due to Norway's status as a non-member state, the total expenditure for Norwegian beneficiaries as a general rule cannot be changed.

A specific set of rules applies for expenditure under budget lines 2-3. The total of the two lines should in principal not be higher than 50% of the total eligible expenditure on project level. Consult the Fact Sheet on the Detailed Costed Workplan for further information.

If a project involves investments in infrastructure, supplementary information is required. This information must be given as an appendix to the application form.

All material investments must be posted under budget line 8. This budget line contains at an aggregate level all financial information regarding investments. In addition to this aggregate information the project application must contain an appendix in which the individual investments at sub-project level must be described. The sub-projects must be described in a uniform way that enables a comparison of sub-projects. The sub-project description **must contain** information about the nature of the individual sub-project as well as on the amounts set aside for the **purchase of land** – if relevant for the project. The programme Secretariat may require further information on specific matters regarding infrastructure investments if needed. Please remember that material investments should have a transnational impact (see also 4.1).

Only costs directly related to the project are eligible. This means that even though certain types of expenditure can be included in the project as a whole, they may not be eligible for ERDF assistance or they may have special grant rates. Please consult the Fact Sheet on Eligible Costs for detailed information on specific types of expenditure.

The national arrangements for the first level control are not in place yet. However, it is recommendable to set aside a budget for control, which might have to be performed externally.

Any revenue generated as part of the project must be reported on budget line 12 as a negative figure and must be specified in an appendix.

The total expenditure divided on partner is stated in budget line 15. Beneath budget line 15, the funding plan for the project must be stated. The funding plan consists of a line for ERDF assistance per partner, a line for own funding and a line stating the total funding. This last line and budget line 15 must be equivalent.

#### Grant Rate

In order to ensure a precise and real picture of the split of (common) costs between the beneficiaries and in order to ease the administration and monitoring of projects at programme level, you should be aware that **all beneficiaries in a project must apply for the same grant rate**. Experience shows that almost all projects will apply for a 50 % grant rate.

The apportionment of expenditure on budget lines and the funding plan will dictate the format of future financial reports.

#### Round financial figures in the application

Please bear in mind that no decimal-figures will be accepted in the financial section of the application, e.g. you should state €1.000 and not €999, 77.

6.2 As commitment of assistance is granted on an annual basis you are asked to break down the *estimated expenditure for each partner annually*. Expenditure must be legally committed to projects by 31 December 2013, but payments may be made until 31 December 2015. Estimate the expenditures to the nearest thousand Euro. For practical reasons all project activities must be completed before the end of June 2015.

Please note that assistance from the North Sea Programme reflects commitment of funds per year and is subject to the “de-commitment” rule. Please consult the Fact Sheet on Auto Decommitment for further information.

## 7. Timetable for Project

7.1 State what date the project is estimated to *start*.

7.2 State what date the project is planned to *end*. Note that as commitment of assistance is subject to the “de-commitment” rule the project completion date can, as a general rule,

not be changed. For practical reasons all project activities must be completed before the end of June 2014.

7.3 Indicate the estimated starting and completion dates, the main outcomes and the responsible partner and partners involved for the *phases* that you stated in section 3.6B Phases.

## **8. Publicity**

8.1 In order to publicise the project as widely as possible, i.e. the project itself, its results and outcomes, a communication plan should be adopted. The communication plan should incorporate all partners and include publicity as well as information and, if relevant, appropriate marketing strategies. The plan should as far as possible indicate concrete measures to be taken under the communication plan.

The plan should indicate what tools and materials intended to be used. All costs for proposed measures under the communication plan need to be included in the financial plan for the project and accounted for in chapter 7, Project Finances.

8.2 In this section the target groups of the communication plan and appropriate marketing plan should be stated. It should include who will benefit from the project and it might also include other target groups such as authorities on different levels, enterprises, NGOs, other projects concerning the same issues as your project, the general public and the media.

You may find guidance for a communication plan in the download section of the programme's website – [www.northsearegion.eu](http://www.northsearegion.eu).

## **9. Bank Information**

9.1 Write the name and address of the bank of the Lead Beneficiary.

9.2 Fill in the bank account number of the bank of the Lead Beneficiary to which the assistance from ERDF/Norway should be transferred.

9.3 Fill in the bank code.

9.4 If a SWIFT code is used, fill in the code here.

9.5 If an internal reference is requested, state the person's name here.

9.6 State the name of the account holder(s).

## **10. Certification and Submission**

The application needs to be signed by an authorised person on behalf of the Lead Beneficiary and it should have the official stamp of the Lead Beneficiary. The name of the person signing should be clarified using capital letters and the position of the person

should be specified. State the date the Application Form is submitted to the North Sea Programme Joint Secretariat.

## **11. List of Appendices**

The first appendix is the information on the project indicators. The second appendix is covering the environmental information about the project. The third appendix are Letters of Intent (LoI). Could you please make a coversheet listing all LoI's and indicating which are originals. When relevant make an appendix on the budget breakdown of sub-partners or on specification of the requested budget lines in section 6.1. Fact Sheet No 8 details the requirements regarding sub-partners. Please list organisations participating in the project as sub-partners, indicating the beneficiary they are attached to in the table which you can download from the programme's website.

Further appendixes are listed in section 11 of the application form.

If you need to add any further information related to the Project Application it should be added in an appendix to the application form – please note that this additional appendix cannot exceed 10 pages. Please remember that only the application form itself and the required appendixes are guaranteed to be considered by the members of the Steering Committee. It is therefore essential to provide all the important information in the form itself.

## Appendix 1 to project application – Indicator information

Appendix 1 is a mandatory part of the application form and has to be completed by every applicant.

Indicators have been established for the Operational Programme for each priority for the purpose of measuring progress and effectiveness its operations. They can be found in the Operational Programme following each priority description (chapter 4). Please refer also to Appendix 4.1 of the Operational Programme for definitions and explanatory notes on indicators, targets and data collection.

### ***1.1 Programme Level Impacts***

A number of programme level impacts can be identified to occur from the four programme objectives/priorities (chapter 4). They are not integral part of the Operational Programme but merely assist monitoring of progress made at programme level and identifying effects made by implementing the Operational Programme through the projects.

The data on programme level impacts is collected from projects at application stage (Application Form) and at the end of a project (Final Report). They will be aggregated for the purposes of programme evaluation during and towards the end of programme implementation.

In the Application Form, please indicate the relevant impact that your project is likely to contribute to compared to the current situation in the programme area. It is possible to choose more than one field, but please be selective by ticking no more than four (4) boxes.

### ***1.2 Core Output and Result Indicators***

#### **The structure of the indicator system**

##### ***Groups of indicators:***

1. COMPULSORY INDICATORS

These indicators must be established for every project, that is, it is compulsory to relate to each indicator and, if relevant, specify the exact indicator description regarding what you intend to measure.

2. GENERIC INDICATORS

These indicators are potentially relevant for every project as they relate to activities cutting across all priorities.

3. PRIORITY INDICATORS

It is compulsory to establish at least one output and one result indicator. If the priority indicators listed in the table do not suit the planned activities, outputs and results, additional indicators may be established. However, this must be duly justified!

Indicators from priorities other than the one targeted by the project may also be chosen, as relevant. This is important as it shows the interrelation of the projects and priorities and the project's wider contribution to the programme objectives.

4. ENVIRONMENTAL INDICATORS

These indicators have to be considered by all projects in Appendix 2 to the Application Form where Environmental Information on issues relevant for a project must be provided.

**Sub-categories:**

1. Core activities
2. Awareness raising activities
3. Activities strengthening transnational cooperation
4. Territorial coverage of projects

**Types of outcomes<sup>1</sup>**

1. output
2. result
3. impact

**The indicator table**

The headline row of the indicator table is illustrated and explained below:

1)	2)	3)	4)	5)	6)	7)	8)	9)
Output	Result	Impact	Indicator description	Project: please specify description	Unit	Project: please specify baseline	Project: please specify project target	Project: please specify source of information

- 1), 2), 3) These fields are predetermined based on the programme (priority) indicators, indicating whether the respective indicator measures an output, result or impact. They are not to be changed by projects.
- 4) This column contains the descriptions of the indicators established by the programme at priority level.
- 5) This column is for projects to specify their project indicator in correspondence to the priority indicator described in column 4).

**Example:**

output	result	impact	Indicator description	Project: please specify definition
X			transnational knowledge bases, technology transfer centres / schemes, know-how exchange platforms	exchange platform between urban and rural communities on business location management established and running

<sup>1</sup> Please refer to Appendix 4.1 of the Operational Programme for definitions and explanatory information.

## Application Guide

- 6) Quantifying unit in which the indicator is counted (e.g. number, €, km, etc.), it is predetermined and cannot be changed.
- 7) Quantity of the indicator unit at project start.
- 8) Quantification of the indicator related to the expected quantity by the end of the project (target value).
- 9) States the source from which the indicator value will be derived during monitoring (e.g. project survey).

### **How to complete the indicator table?**

Each (programme) indicator shown in the table comprises the following elements: indicator description, unit in which the indicator will be measured (quantified), baseline information and target.

Accordingly, there are four columns to be completed in the table for each indicator chosen by a project: specified indicator description (column 5), baseline information (7), quantified target (8), and source from which the information is collected (9).

### **Further Guidance**

More than one indicator may be established by a project for one (programme) indicator from the in the table in Appendix 1. For example, if certain groups of the society are targeted by one activity or bulk of activities it is mandatory to establish indicators for each social group addressed, as appropriate and viable; the same applies to a split by sex (Example 1). Likewise, more than one indicator has to be established if different kinds of activities relate to one priority indicator (Example 2). The same is the case for different types of outputs (Example 3). The table in Appendix 1 provides several rows for each of those indicators where the abovementioned cases may be relevant.

Example 1

<b>Priority/Programme Indicator description</b>	<b>Project indicator (specified description)</b>	<b>Unit</b>	<b>Baseline</b>	<b>Target</b>
individuals in different social and age groups (18-24, 55+, male / female, unemployed) undertaken transnational training or staff exchange	<b>Age group 18-24</b> participating in summer school course ( <b>male</b> )	Number	0	30
individuals in different social and age groups (18-24, 55+, male / female, unemployed) undertaken transnational training or staff exchange	<b>Age group 18-24</b> participating in summer school course ( <b>female</b> )	Number	0	30

## Application Guide

individuals in different social and age groups (18-24, 55+, male / female, unemployed) undertaken transnational training or staff exchange	<b>Age group 55+</b> participating in summer school course ( <b>male</b> )	Number	0	25
individuals in different social and age groups (18-24, 55+, male / female, unemployed) undertaken transnational training or staff exchange	<b>Age group 55+</b> participating in summer school course ( <b>female</b> )	Number	0	25

### Example 2

Priority/Programme Indicator description	Project indicator (specified) description	Unit	Baseline	Target
transnational knowledge bases, technology transfer centres / schemes, know-how exchange platforms	<b>technology transfer centre</b> established and running (Work Package 2)	Number	0	1
transnational knowledge bases, technology transfer centres / schemes, know-how exchange platforms	<b>know-how exchange platform</b> created and launched (work package 3)	Number	0	1

### Example 3

Priority/Programme Indicator description	Project indicator (specified) description	Unit	Baseline	Target
transnational dissemination outputs (e.g. exhibitions, events, published material, websites, TV and radio appearances)	<b>Transnational conferences</b> in partner regions held	Number	0	3
transnational dissemination outputs (e.g. exhibitions, events, published material, websites, TV and radio appearances)	<b>Web cast video</b> produced	Number	0	1

**Important note:** Please do not use indicators that represent a subset/subclass of another established indicator; this is advised in order to avoid double counting. For example, if you establish one indicator on the age group 18-24 for males and one for females, do not set up a third indicator on the total number of individuals in this age group. Another example of

## Application Guide

this is the combination of an indicator for the age group 18-24 and a second one for the total number of e.g. training course participants, of which the 18-24 year-olds are a subclass. The same rule is relevant for the different types of activities (e.g. events) and outputs (e.g. dissemination).

A project may, in exceptional cases, establish additional indicators that are not predetermined at priority/programme level but are specifically relevant for the project. Please provide these on a separate sheet in an additional appendix, using the same table format as in Appendix 1. The establishment of additional indicators must be duly justified. Please make sure that primarily the indicators pre-determined by the programme are used.

## Appendix 2 to project application – Environmental information

This appendix is a mandatory part of the application form and has to be completed by every applicant.

E.1A Please tick which of the *classifications* regarding environmental effects apply to your project.

- *Neutral*: no or only very small environmental effects.
- *Positive*: environmental effects lead to an improvement of the environmental condition.
- *Negative*: environmental effects lead to a degradation of the environment.

E.1B Please *explain how and to what extent your project contributes* to the classification you have chosen. This can be done by e.g. describing a clear link between the project activities and/or the end-results and the classifications.

E.2 Analogue to section E.1A, please indicate for each environmental issue/asset, which of the *classifications* regarding environmental effects applies to your project.

E.3 Please list relevant environmental protection objectives that your project relates to. For each objective, please state the relevant document (political agreement, policy paper, legal basis, etc.) and indicate the level at which it applies to. For assistance, refer to Appendix B of this guide.

E.4 If your project relates to certain environmental issues or is likely to have environmental effects (positive or negative), it is mandatory to establish the respective relevant indicator(s) for your project. Tick the box to the left of the table to select a relevant indicator. In a next step, please define the following elements for each indicator chosen: specification of the general indicator description, definition of the unit in which the indicator will be measured, baseline value, target value and source of information from which data will be collected.

Please note that there are four environmental issues for which the description is already specified and the unit for quantification is predetermined. They are the following:

Programme / priority indicator description	Unit	Baseline	Target	Source of information
Biodiversity, flora and fauna: Natura 2000 areas affected	number			
Air and climatic factors: reduction in green house gas emissions	CO <sub>2</sub> equivalent (tons)			
Landscape: area subject of change	ha			
Use of renewable & non-renewable resources: additional capacity of renewable energy production	MWh			

As far as applicable to your project, please try to use these predetermined indicators. Should they not be relevant please establish other relevant indicators based on the general 'indicator description' in the second column.

## Appendices

### Appendix A - Project Selection Criteria

#### Core selection criteria (c1 – c10)

	Criteria	Description
	<b>Programme</b>	
c1	Contribution to transnational regional development	<p>Projects must demonstrate the importance of their transnational approach to the topic addressed for achieving significant impact in the NSR. The applications must also show how project activities contribute to regional development in the transnational perspective. The perspectives for regional development are described in the synthesis report and its corresponding reports as a complement of the long-term spatial vision NorVision. Another source of reference is the Territorial Agenda of the EU.</p> <p>How to: A way to do this is to demonstrate clearly how the project objectives link to transnational regional development. It will be insufficient to reiterate the content of programme documents.</p>
c2	Contribution to the joint transnational strategy	<p>The joint transnational strategy has been developed building on the analysis of the opportunities and challenges for the North Sea Region. It is formulated in chapter three of the operational programme. Projects should have clear links to the strategy.</p> <p>How to: A way to do this is to demonstrate the link to the programme priorities, e.g. in terms of the concrete project activities. It will be insufficient to reiterate the content of programme documents.</p>
c3	Project matches the specific area of intervention	<p>The operational programme includes 4 priorities. Each of these priorities has specific areas of intervention. They are described in chapter four of the operational programme. Applications must refer at least to one area of intervention. It is also possible to refer to other areas, as they are not necessarily independent from each other.</p> <p>How to: Applicants are asked to carefully examine the priorities and areas of intervention in order to select those which correspond to the aim, objectives and activities of the project.</p>
	<b>Partnership</b>	
c4	Horizontal and/or vertical co-ordination and co-operation	<p>The project has to consider the relevant actors on local, regional and (trans-) national level. On the horizontal level actors from different relevant sectors should be considered, e.g. politicians, administrations, institutions (e.g. research, chambers of commerce), NGOs, companies (SMEs). On the vertical level, the process of decision-making, relevant for the project, has to be considered.</p> <p>How to: The application must show why and how the relevant actors take part in the project and how they are co-ordinated. There must also be a description on how decision-making affects the project and if so in which way it is taken into consideration. Local, regional and (trans-) national levels are to be reflected.</p>

## Application Guide

c5	Relevant and viable partnership	<p>A relevant and viable partnership is a pre-condition for the quick and effective implementation of a project. This is necessary because of the risk of loss of funding due to the decommitment rule. A relevant partnership is also necessary to make sure the project links to relevant national policies of the partner-countries involved in the project. The partnership should also ensure that the results of the project guarantee long lasting effects.</p> <p>How to: Applications may demonstrate the relevance and viability of the partnership by describing its transnationality, by the detailed costed workplan and the communication strategy.</p>
<b>Policies</b>		
c6	Delivery towards Gothenburg strategy and/or Lisbon agenda	<p>Projects deliver at least to the Gothenburg strategy and/or to the Lisbon Agenda.</p> <p>Gothenburg Strategy: Sustainable development is formulated as an objective in the general rules for the ERDF. Projects are asked to make contributions towards the European Commission's strategy for sustainable development, which recognizes that economic growth, social inclusion and environmental protection must go hand in hand.</p> <p>Aims of the renewed Lisbon agenda:</p> <ul style="list-style-type: none"> <li>• making Europe and its regions a more attractive place to invest and to work,</li> <li>• knowledge and innovation for growth, and</li> <li>• more and better jobs.</li> </ul> <p>How to: A way to do this is to demonstrate how, for example the activities of the project take economic growth, social inclusion and environmental protection into consideration and to demonstrate a clear link between the concrete project results and at least one of the aims.</p>
<b>Output</b>		
c7	Project will demonstrate added value and deliver tangible and measurable results	<p>Projects have to make a difference. They contribute to build the capacity for innovation, to sustainable management, to improved accessibility or to the sustainability and competitiveness of communities by delivering towards the Gothenburg and Lisbon agendas. Projects also need to demonstrate that the project activities are additional. They should propose activities that would go beyond what will be carried out by the partners anyway.</p> <p>Projects will deliver concrete outputs and tangible implementation activities, which have the potential to make a change. Studies, road-maps, action-plans, etc. are possible but should be <i>part</i> of the activities and <i>not</i> a main result by themselves.</p> <p>How to: Projects have to demonstrate clearly that the activities carried out and the project results will make a change in comparison to the current situation and that they are additional to what is being planned anyway.</p>
c8	Project will demonstrate value for money	<p>The project's budget should be proportionate to the results aimed for. In addition projects will have to demonstrate cost-effectiveness.</p> <p>How to: This will be demonstrated in the detailed costed workplan in the application.</p>

## Application Guide

	<b>Indicators</b>	
c9	Information on core indicators complete.	<p>The application form contains a set of indicators for measuring the progress and success.</p> <p>How to: Applicants must fill out the indicator information and present a baseline and a target for each of the indicator. Beside the core indicators only those must be chosen which are relevant for the project.</p>
	<b>Legislative Requirements</b>	
c10	Projects will comply with national and EU law and policy	<p>All organisations in the Member States have to comply with EU and national law and policy. The partners in the project are responsible for carrying out the activities in accordance with the applicable legislation. All projects need to be consistent with Community policies and operations regarding equal opportunities. Projects need to consider their impact on equal opportunities. National and European tender rules also needs to be considered.</p> <p>How to: The Lead Beneficiary certifies compliance with national and EU regulations in signing the Application Form and, when the project is approved, the Contract. The representative(s) from the national authority of the country of the Lead Beneficiary will be asked to confirm the compliance of the project with national policy before the Steering Committee can decide on the project.</p>

### Priority Considerations (p1 – p9)

	<b>Criteria</b>	<b>Description</b>
	<b>Approach</b>	
p1.	Description of problem to be tackled and the solution	Projects that provide a clear description about the problem the project proposes to tackle and which also provide a comprehensive idea about the contribution the project can make to its solution will be prioritised.
p2.	Concrete implementation of project results towards European policies	Implementation activities, which clearly make a contribution to the aims of ongoing European policies, will be prioritised. These include among others Gothenburg and Lisbon agendas, the Territorial Agenda, Trans European Networks, Energy Efficiency and other ongoing and important European policies in relation to the 4 priorities of the Operational Programme.
p3.	Involvement of public private partnerships and/or SMEs and leverage of extra investment.	Projects involving public private partnerships and/or Small and Medium sized Enterprises (SME) will be prioritised. Generating future private and public investment within a transnational perspective will be an additional asset.
p4.	Promoting innovation	Projects promoting innovation and the transition to a knowledge-based economy in the North Sea Region will be prioritised. The programme aims to develop a positive innovation-orientated culture.
	<b>Transnationality</b>	
p5.	Transnational approach	Project activities, which are clearly transnational, will be prioritised. The implementation activities of the project, should have a measurable transnational impact.

## Application Guide

p6.	Transnational partnership	Partnerships including partners from several different member states who will have potential impact on the transnational area and which cover large parts of the geographical area will be prioritised.
	<b>Knowledge transfer</b>	
p7.	Consideration of experiences from former and other ERDF projects	Taking into consideration experiences and outcomes from former and other ERDF activities is an advantage.
p8.	Links to other programmes and projects	Clear and activity based links to other programmes and projects relating to the project-topics will be a priority factor.
p9.	Publication and communication strategy and public ownership	<p>Projects considering the following points for their publication and communication strategy will be prioritised:</p> <ul style="list-style-type: none"> <li>- A clearly structured publication, dissemination and marketing plan, which includes all partners.</li> <li>- Communication on the international, national, regional and local level aiming to transport the transnational added value of the project.</li> <li>- Focusing on all media and additionally using progressive techniques like e.g. web-casting, blogs, etc.</li> <li>- Explaining Interreg and the EU-context.</li> <li>- Considering the needs of the specific target-group(s).</li> <li>- Using the potential of public ownership of the project results within the strategy.</li> </ul>

## Appendix B - Indicative overview of environmental objectives for E.3

Biodiversity, flora and fauna	
EU	Protect and restore habitats and natural systems and halt the loss of biodiversity by 2010.
	Improve fisheries management to reverse the decline in stocks and ensure sustainable fisheries and healthy marine ecosystems, both in the EU and globally.
	Protect and where necessary restore the structure and functioning of natural systems
	OSPAR Convention: Protect and conserve the ecosystems and the biological diversity of the maritime area which are, or could be, affected as a result of human activities, and to restore, where practicable, marine areas which have been adversely affected, in accordance with the provisions of the Convention, including Annex V and Appendix 3.
Belgium	Objectives as set out in the National Action Plan
Denmark	Objectives as set out in the action plan for the preservation of biodiversity
Netherlands	Re-establish the diversity of Dutch flora and fauna to make a proportional contribution to towards global biodiversity
Norway	Implement measures designed to halt the loss of biodiversity by 2010
Sweden	By 2010 loss of biological diversity in Sweden will have been halted
	By 2015 the conservation status of threatened species in Sweden will have improved to the point where the proportion of evaluated species classified as threatened will have fallen by at least 30% on corresponding figures for 2000, with no increase in the percentage of species that have become regionally extinct.
Germany	Bring about a stable situation at a high level for all species and the habitats they represent
Population and human health	
EU	Make food safety and quality the objective of all players in the food chain
	Ensure that chemicals are only produced and used in ways that do not pose significant threats to human health
	Tackle issues related to outbreaks of infectious de
	Achieve a quality of environment where the levels of man-made contaminants do not give rise to significant impacts on, or risks to, human health
Denmark	Reduce harmful impacts on human health and on the environment to the greatest possible extent, no matter what
Norway	Intensify efforts to reach the targets for substances that are hazardous to health and the environment, and to eliminate emissions of the most environmentally hazardous substances by 2020.
	Reduce the environmental pressure caused by production and consumption in Norway.
Sweden	Newly manufactured finished products will as far as possible be free from: - new organic substances that are persistent and bioaccumulating, new substances that are carcinogenic, mutagenic and reprotoxic, and mercury, as soon as possible, but no later than 2007; - other carcinogenic, mutagenic and reprotoxic substances, and endocrine disrupting substances or highly allergenic substances, by 2010, if the products that contain them are intended to be used in such a way that they will enter natural cycles; - other organic substances that are persistent and bioaccumulating, and cadmium and lead, by 2010.
	Health and environmental risks associated with the manufacture and use of chemical substances will be reduced continuously up to 2010
	By 2015 the dietary and occupational exposure of the population to cadmium will be at a level that is safe from a long-term public health point of view.
	By 2010 environmental concentrations of radioactive substances emitted from all human activities will be so low as not to represent a threat to human health or biological diversity.
	By 2020 the annual incidence of skin cancer caused by ultraviolet radiation will not be greater than it was in 2000.
Germany	Raise the proportion of agricultural land farmed organically to 20% by 2010.
	Reduce the nitrogen surplus for the whole agricultural sector to 80 kg/ha by 2010.

## Application Guide

Soil	
EU	Protect soils against erosion and pollution
Denmark	Make sure that soil contamination in urban areas and pollution that may threaten the current or future supply of drinking water does not give rise to health problems
Sweden	By 2010 the trend towards increased acidification of forest soils will have been reversed in areas that have been acidified by human activities, and a recovery will be under way.
U.K.	Objectives as set out in the "First Soil Action Plan for England: 2004- 2006"
Water	
EU	OSPAR Convention: Prevent pollution of the maritime area from ionising radiation through progressive and substantial reductions of discharges, emissions and losses of radioactive substances, with the ultimate aim of concentrations in the environment near background values for naturally occurring radioactive substances and close to zero for artificial radioactive substances
	OSPAR Convention: Prevent pollution of the maritime area by continuously reducing discharges, emissions and losses of hazardous substances, with the ultimate aim of achieving concentrations in the marine environment near background values for naturally occurring substances and close to zero for man-made synthetic substances.
	OSPAR Convention: Combat eutrophication in the OSPAR maritime area, in order to achieve and maintain a healthy marine environment where eutrophication does not occur
Netherlands	Keep NL safe and habitable and to limit the risk of (damage) from flooding as well as to prevent exhaustion of water reserves
Sweden	By 2010 not more than 5% of all lakes and 15% of the total length of running waters in the country will be affected by anthropogenic acidification.
	By 2010 Swedish Waterborne anthropogenic emissions of phosphorus compounds into lakes, streams and coastal waters will have decreased by at least 20% from 1995 levels. The largest reductions will be achieved in the most sensitive areas.
	By 2010 emissions of ammonia in Sweden will have been reduced by at least 15% compared with 1995 levels.
	By 2010 emissions of nitrogen oxides to air in Sweden will have been reduced to 148,000 tonnes.
	Lakes and watercourses must be ecologically sustainable and their variety of habitats must be preserved
	By 2010 long-term protection against development activities that restrict water use will be provided for water-bearing geological formations of importance in meeting present and future water supply needs.
	By 2010 the use of land and water will not cause changes in groundwater levels that adversely affect the water supply, soil stability, or the animal and plant life of adjoining ecosystems.
	By 2010 all bodies of water used for the abstraction of water intended for human consumption, and providing more than 10 m <sup>3</sup> a day as an average or serving more than 50 persons, will meet the Swedish standards for good-quality drinking water with respect to anthropogenic pollution. By 2010 long-term protection will be provided for at least 50% of marine environments of high conservation value and at least 70% of coastal and archipelago areas with significant natural and cultural assets. By 2005 another five marine areas, plus a further 14 by 2010, will be protected as nature reserves. Together, these will form a representative network of marine natural habitats. In addition, an area in which fishing is permanently banned will be established by 2006 for evaluation by 2010. A further three coastal and open sea areas with permanent bans will be established in the North Sea and the North Sea respectively by 2010 for evaluation by 2015. By 2010 total annual bycatches of marine mammals will not exceed 1% of each population. Bycatches of seabirds and nontarget fish species will have a negligible impact on the populations concerned or on the ecosystem.
	By 2008 catches of fish, including bycatches of juveniles, will not exceed levels commensurate with maintaining fish stocks of a size and composition sufficient to ensure that the ecosystem's basic structure and functions are preserved. Populations will have been restored to levels well above biologically safe limits.
	By 2010 noise and other disturbance from boat traffic will be negligible in particularly sensitive

## Application Guide

	and designated archipelago and coastal areas.
	By 2010 discharges of oil and chemicals from ships will be minimized and reduced to a negligible level by stricter legislation and increased monitoring.
U.K.	Objectives as set out in the document "Directing the Flow – priorities for future water policy" Objectives as set out in the document 'Safeguarding Our Seas'
	<b>Climatic factors</b>
EU	Climatic factors In the short to medium term reduce greenhouse gas emissions by 8% compared with 1990 levels by 2008-12 (as agreed at Kyoto)
	In the longer term reduce global emissions even further by approximately 20-40% on 1990 levels by 2020;
	Financing: increase R&D, Dissemination funding
	Emission trading – national implementation
	Renewable energy: implementation RES-E Directive and biofuels directive
Belgium	Objectives as set in the National Climate Plan
Denmark	Reduce emissions of six greenhouse gases by 21 per cent between 1990 and 2008-12 to halve the greenhouse gas emissions of the industrialised countries by 2030
Netherlands	Netherlands: Achieve a sustainable energy housekeeping (neutral climate effects, safe and available at a reasonable price) and sustainable mobility (acceptable environmental effects and accessibility)
Norway	Ensure that Norway meets its commitment under the Kyoto Protocol play an active role in developing a more ambitious global climate agreement for the period after 2012
Sweden	As an average for the period 2008–12, the emissions of greenhouse gases will be at least 4% lower than in 1990.
U.K.	Reduce greenhouse gas emissions by 12.5 per cent below base year levels by 2008-12, and reducing CO <sub>2</sub> emissions by 20 per cent below 1990 levels by 2010 10 per cent of electricity to be supplied from renewables by 2010/11, with an aspiration to double this by 2020.
Germany	From 2008-2012 reduce the six green house gasses named in the Kyoto Protocol by 21% compared to 1990 In the long term stabilising green house gas emissions at a level which prevents dangerous disturbances of the climate system
	<b>Air</b>
Belgium	Objectives as set out in the Federal Ozone Plan 2004-2007
Denmark	The content of suspended particles in the air must be so low as to have no negative impact on the quality of the life and health of the Danish population or the environment Denmark must reduce acidification, eutrophication and ground-level ozone. Effective implementation of international regulations on the emission of SO <sub>2</sub> , NO <sub>x</sub> , VOC and NH <sub>3</sub> in Denmark by 2010 has top priority.
Norway	introduce the necessary measures and instruments needed to ensure that Norway meets its commitment to reduce emissions of nitrogen oxides (NO <sub>x</sub> ) under the Gothenburg Protocol by 2010.
Sweden	A level of sulphur dioxide of 5 µg/m <sup>3</sup> as an annual mean will have been achieved in all municipalities by 2005. A level of nitrogen dioxide of 60 µg/m <sup>3</sup> as an hourly mean and of 20 µg/m <sup>3</sup> as an annual mean will largely not be exceeded by 2010. By 2010 concentrations of ground-level ozone will not exceed 120 µg/m <sup>3</sup> as an 8-hour mean. By 2010 emissions in Sweden of volatile organic compounds (VOCs), excluding methane, will have been reduced to 241,000 tonnes.
	A level of particles (PM <sub>10</sub> ) of 35 µg/m <sup>3</sup> as a daily mean and of 20 µg/m <sup>3</sup> as an annual mean will not be exceeded by 2010.
	A level of particles (PM <sub>2.5</sub> ) of 20 µg/m <sup>3</sup> as a daily mean and of 12 µg/m <sup>3</sup> as an annual mean will not be exceeded by 2010. The daily mean may not be exceeded for more than 37 days per year.

## Application Guide

	A level of benzo(a)pyrene of 0.3 ng/m <sup>3</sup> as an annual mean will largely not be exceeded by 2015.
	By 2010 emissions of nitrogen oxides to air in Sweden will have been reduced to 148,000 tonnes.
	By 2010 the great majority of emissions of ozone-depleting substances will have ceased.
U.K.	Objectives as defined in the "Air Quality Strategy 2000"
Germany	By 2010 concentrations of the main air pollutants should be reduced with around 70% compared to 1990.
	<b>Energy efficiency</b>
EU	Financing: Increase R&D, Dissemination funding
	Low carbon technology investment fund (EIB)
	Technology Platforms related to low carbon technologies (e.g. hydrogen and photovoltaics)
	Energy Service Directive
	Buildings Directive
	Emission trading: review 2006
	Eco-design directive
	Energy efficiency standards for energy-using products
	implementation daughter directives
	Energy labelling including Energy Star (extension of scope)
	Incentive schemes and fiscal instruments
	Intelligent Energy Europe Programme
	Clean vehicles
	Hydrogen pilot project
Germany	By 2002 aiming for an approximate doubling of energy - and raw materials productivity in relation to 1990 and 1994 respectively
Germany	Increase the proportion of renewable energy sources to 4.2% of the primary energy consumption and 12.5% of the electricity consumption between the years 2000 and 2010.
	<b>Use of renewable and non renewable sources</b>
EU	Break the links between economic growth, the use of resources and the generation of waste
	Prioritise waste prevention, followed by recycling, waste recovery and incineration, and finally, only as a last resort, land filling.
	The target is to reduce the quantity of waste going to final disposal by around 20% on 2000 levels by 2010 and in the order of 50% by 2050.
	Transport demands accessibility and mobility
	Decouple transport growth significantly from growth in Gross Domestic Product in order to reduce congestion and other negative side-effects of transport.
	Bring about a shift in transport use from road to rail, water and public passenger transport so that the share of road transport in 2010 is no greater than in 1998
	<b>Landscape</b>
Sweden	By 2010 all meadow and pasture land will be preserved and managed in such a way as to preserve its value. The area of traditionally managed meadow land will increase by at least 5,000 hectares and the area of managed pasture land of the most endangered types will increase by at least 13,000 hectares by 2010.
	Small-scale habitats on farmland will be preserved to at least the same extent as today throughout the country. By 2005 a strategy will have been adopted to increase the number of such habitats on the agricultural plains of Sweden.
	The number and extent of culturally significant landscape features that are managed will increase by about 70% by 2010.
	By 2010 damage to soil and vegetation caused by human activities will be negligible.
	Noise in mountain areas from motor vehicles driven off-road and from aircraft will be reduced.
U.K.	Objectives as set out in the in the White Paper 'Our Countryside: the future'

## Application Guide

	<b>Transport demands accessibility and mobility</b>
Germany	Decouple economic output and transport by reducing freight transport intensity by around 5% and passenger transport by 20% by the year 2020, as compared with the 1999 figures.
	Increase the proportion (modal split) of non motorised transport and environmentally friendly forms of transport, such as rail, public transport and the waterways. In 2015 freight transport by rail should have a 24.3% share and inland shipping should have a 14.1% share. The goal for public passenger transport is to rise the share of the overall transport output.
	<b>Noise</b>
Denmark	Objectives as set out in the national strategy
U.K.	Objectives as set out in the 'National Ambient Noise Strategy'
	<b>Land use</b>
U.K.	Objectives as set out in the document "Regional Spatial Strategies"
Germany	New land use to account for maximum 30 ha per day in the year 2020

## Appendix C – NUTS 3 regions

Eligible area:



## The North Sea Region NUTS regions by country

The North Sea Regions by country				
	State	NUTS 1 regions	NUTS 2 regions	NUTS 3 regions
<b>be</b>	<b>Belgium</b>			
<b>be2</b>		<b>Vlaams Gewest</b>		
<b>be21</b>			<b>Antwerpen</b>	
be211				Antwerpen (Arrondissement)
be212				Mechelen
be213				Turnhout
<b>be23</b>			<b>Oost-Vlaanderen</b>	
be231				Aalst
be232				Dendermonde
be233				Eeklo
be234				Gent (Arrondissement)
be235				Oudenaarde
be236				Sint-Niklaas
<b>be25</b>			<b>West-Vlaanderen</b>	
be251				Brugge
be252				Diksmuide
be253				Ieper
be254				Kortrijk
be255				Oostende
be256				Roeselare
be257				Tielt
be258				Veurne

The North Sea Regions by country				
	State	NUTS 1 regions	NUTS 2 regions	NUTS 3 regions
<b>dk0</b>	<b>Denmark</b>	<b>Danmark</b>		
<b>dk01</b>			<b>Hovedstaden</b>	
dk011				København by
dk012				Københavns omegn
dk013				Nordsjælland
dk014				Bornholm
<b>dk02</b>			<b>Sjælland</b>	
dk021				Østsjælland
dk022				Vest- og Sydsjælland
<b>dk03</b>			<b>Syddanmark</b>	
dk031				Fyn
dk032				Sydjylland
<b>dk04</b>			<b>Midtjylland</b>	
dk041				Vestjylland
dk042				Østjylland
<b>dk05</b>			<b>Nordjylland</b>	
dk050				Nordjylland

Application Guide

The North Sea Regions by country				
	State	NUTS 1 regions	NUTS 2 regions	NUTS 3 regions
<b>de</b>	<b>Germany</b>			
<b>de5</b> de50 de501 de502		<b>Bremen</b>	<b>Bremen</b>	Bremen, Kreisfreie Stadt Bremerhaven, Kreisfreie Stadt
<b>de6</b> <b>de60</b> de600		<b>Hamburg</b>	<b>Hamburg</b>	Hamburg
<b>de9</b> <b>de91</b> de911 de912 de913 de914 de915 de916 de917 de918 de919 de91a de91b		<b>Niedersachsen</b>	<b>Braunschweig</b>	Braunschweig, Kreisfreie Stadt Salzgitter, Kreisfreie Stadt Wolfsburg, Kreisfreie Stadt Gifhorn Göttingen Goslar Helmstedt Northeim Osterode am Harz Peine Wolfenbüttel
<b>de92</b> de922 de923 de925 de926 de927 de928 de929			<b>Hannover</b>	Diepholz Hameln-Pyrmont Hildesheim Holzminden Nienburg (Weser) Schaumburg Region Hannover
<b>de93</b> de931 de932 de933 de934 de935 de936 de937 de938 de939 de93a de93b			<b>Lüneburg</b>	Celle Cuxhaven Harburg Lüchow-Dannenberg Lüneburg, Landkreis Osterholz Rotenburg (Wümme) Soltau-Fallingb.otel Stade Uelzen Verden
<b>de94</b> de941 de942			<b>Weser-Ems</b>	Delmenhorst, Kreisfreie Stadt Emden, Kreisfreie Stadt

## Application Guide

de943				Oldenburg (Oldenburg), Kreisfreie Stadt
de944				Osnabrück, Kreisfreie Stadt
de945				Wilhelmshaven, Kreisfreie Stadt
de946				Ammerland
de947				Aurich
de948				Cloppenburg
de949				Emsland
de94a				Friesland
de94b				Grafschaft Bentheim
de94c				Leer
de94d				Oldenburg, Landkreis
de94e				Osnabrück, Landkreis
de94f				Vechta
de94g				Wesermarsch
de94h				Wittmund
<b>def</b>		<b>Schleswig-Holstein</b>		
<b>def0</b>			<b>Schleswig-Holstein</b>	
def01				Flensburg, Kreisfreie Stadt
def02				Kiel, Kreisfreie Stadt
def03				Lübeck, Kreisfreie Stadt
def04				Neumünster, Kreisfreie Stadt
def05				Dithmarschen
def06				Herzogtum Lauenburg
def07				Nordfriesland
def08				Ostholstein
def09				Pinneberg
def0a				Plön
def0b				Rendsburg-Eckernförde
def0c				Schleswig-Flensburg
def0d				Segeberg
def0e				Steinburg
def0f				Stormarn

The North Sea Regions by country				
	State	NUTS 1 regions	NUTS 2 regions	NUTS 3 regions
<b>nl</b>	<b>Netherlands</b>			
<b>nl1</b>		<b>Noord-Nederland</b>		
<b>nl11</b>			<b>Groningen</b>	
nl111				Oost-Groningen
nl112				Delfzijl en omgeving
nl113				Overig Groningen
<b>nl12</b>			<b>Friesland</b>	
nl121				Noord-Friesland
nl122				Zuidwest-Friesland
nl123				Zuidoost-Friesland
<b>nl13</b>			<b>Drenthe</b>	

Application Guide

The North Sea Regions by country				
	State	NUTS 1 regions	NUTS 2 regions	NUTS 3 regions
nl131 nl132 nl133				Noord-Drenthe Zuidoost-Drenthe Zuidwest-Drenthe
<b>nl2</b> <b>nl21</b> nl211 nl212 nl213		<b>Oost-Nederland</b>	<b>Overijssel</b>	Noord-Overijssel Zuidwest-Overijssel Twente
<b>nl23</b> nl230			<b>Flevoland</b>	Flevoland
<b>nl3</b> <b>nl32</b> nl321 nl322 nl323 nl324 nl325 nl326 nl327		<b>West-Nederland</b>	<b>Noord-Holland</b>	Kop van Noord-Holland Alkmaar en omgeving IJmond Agglomeratie Haarlem Zaanstreek Groot-Amsterdam Het Gooi en Vechtstreek
<b>nl33</b> nl331 nl332 nl333 nl334 nl335 nl336			<b>Zuid-Holland</b>	Agglomeratie Leiden en Bollenstreek Agglomeratie 's -Gravenhage Delft en Westland Oost-Zuid-Holland Groot-Rijnmond Zuidoost Zuid-Holland
<b>nl34</b> nl341 nl342			<b>Zeeland</b>	Zeeuwsch-Vlaanderen Overig Zeeland

The North Sea Regions by country				
	State	NUTS 1 regions	NUTS 2 regions	NUTS 3 regions
<b>se</b>	<b>Sweden</b>			
<b>se2</b>		<b>Södra Sverige</b>		
<b>se21</b> se212			<b>Småland med öarna</b>	Kronobergs län
<b>se22</b> se224			<b>Sydsverige</b>	Skåne län
<b>se23</b> se231 se232			<b>Västsverige</b>	Hallands län Västra Götalands län
<b>se3</b>		<b>Norra Sverige</b>		

Application Guide

se31			Norra Mellansverige	
se311				Värmlands län

The North Sea Regions by country				
	State	NUTS 1 regions	NUTS 2 regions	NUTS 3 regions
<b>uk</b>	<b>United Kingdom</b>			
<b>ukc</b>		<b>North East (England)</b>		
<b>ukc1</b>			<b>Tees Valley and Durham</b>	
ukc11				Hartlepool and Stockton
ukc12				South Teeside
ukc13				Darlington
ukc14				Durham CC
<b>ukc2</b>			<b>Northumberland, Tyne and Wear</b>	
ukc21				Northumberland
ukc22				Tyneside
ukc23				Sunderland
<b>uke</b>		<b>Yorkshire and The Humber</b>		
<b>uke1</b>			<b>East Yorkshire and North Lincolnshire</b>	
uke11				City of Kingston upon Hull
uke12				East Riding of Yorkshire
uke13				North and North East Lincolnshire
<b>uke2</b>			<b>North Yorkshire</b>	
uke21				York
uke22				North Yorkshire CC
<b>uke3</b>			<b>South Yorkshire</b>	
uke31				Barnsley, Doncaster and Rotherham
uke32				Sheffield
<b>uke4</b>			<b>West Yorkshire</b>	
uke41				Bradford
uke42				Leeds
uke43				Calderdale, Kirklees and Wakefield
<b>ukf</b>		<b>East Midlands (England)</b>		
<b>ukf1</b>			<b>Derbyshire and Nottinghamshire</b>	
ukf11				Derbyshire
ukf12				East Derbyshire
ukf13				South and West Derbyshire
ukf14				Nottingham
ukf15				North Nottinghamshire
ukf16				South Nottinghamshire

## Application Guide

<b>ukf2</b> ukf21 ukf22 ukf23			<b>Leicestershire, Rutland and Northamptonshire</b>	Leicester City Leicester CC and Rutland Northamptonshire
<b>ukf3</b>			<b>Lincolnshire</b>	Lincolnshire
<b>ukh</b>		<b>East of England</b>		
<b>ukh1</b> ukh11 ukh12 ukh13 ukh14			<b>East Anglia</b>	Peterborough Cambridgeshire CC Norfolk Suffolk
<b>ukh3</b> ukh31 ukh32 ukh33			<b>Essex</b>	Southend-on-Sea Thurrock Essex CC
<b>ukj</b>		<b>South East (England)</b>		
<b>ukj4</b> ukj41 ukj42			<b>Kent</b>	Medway Kent CC
<b>ukm</b>		<b>Scotland</b>		
<b>ukm2</b> ukm21 ukm22 ukm23 ukm24 ukm25 ukm26 ukm27 ukm28			<b>Eastern Scotland</b>	Angus and Dundee City Clackmannanshire and Fife East Lothian and Midlothian The Scottish Borders Edinburgh, City of Falkirk Perth and Kinross, Stirling West Lothian
<b>ukm5</b> ukm50			<b>North Eastern Scotland</b>	Aberdeen City, Aberdeenshire and North East Moray
<b>ukm6</b> ukm61 ukm62 ukm65 ukm66			<b>Highlands and Islands</b>	Caithness and Sutherland, Ross and Cromarty Inverness and Nairn, Moray, Badenoch and Strathspey Orkney Islands Shetland Islands

## Application Guide

The North Sea Regions by country				
	State	NUTS 1 regions	NUTS 2 regions	NUTS 3 regions
<b>no0</b>	<b>Norway</b>	<b>Norge</b>		
<b>no01</b> no011 no012			<b>Oslo og Akershus</b>	Oslo Akershus
<b>no02</b> no021 no022			<b>Hedmark og Oppland</b>	Hedmark Oppland
<b>no03</b> no031 no032 no033 no034			<b>Søtlandet</b>	Østfold Buskerud Vestfold Telemark
<b>no04</b> no041 no042 no043			<b>Agder og Rogaland</b>	Aust-Agder Vest-Agder Rogaland
<b>no05</b> no051 no052 no 053			<b>Vestlandet</b>	Hordaland Sogn og Fjordane Møre og Romsdal
<b>no06</b> no061 no062			<b>Trøndelag</b>	Sør-Trøndelag Nord-Trøndelag
<b>no07</b> no071 no072 no073			<b>Nord-Norge</b>	Nordland Troms Finnmark